


 (F) Primary 3 - Term 3 (CA2) Science (Henry Park) ✓ Duplicate Print Delete Assign Test

## Test Introduction

[+ Add Introduction](#)

28 Questions (32.5 Points)

Question Bank: 19,439 Questions ?

Test Questions

2 Test Assignments

## Question 1

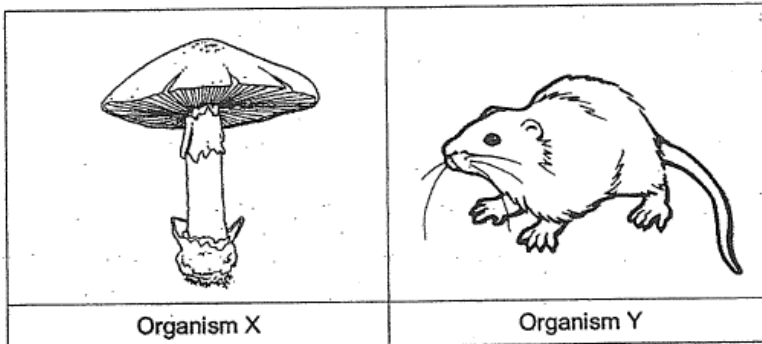
Primary 3 Science » Primary 3 Science (Term 3)

2 pts

## Section A Multiple-Choice Questions (30 marks)

For each question from 1 to 15, four options are given. One of them is the correct answer.

Look at the organisms X and Y shown in the diagrams below.



Which of the following statements below about the organisms X and Y is not correct?

- A) Both need air and water.
- B) Both can respond to changes.
- C) Both depend on other organisms for food.
- ✓ D) Both can move from place to place on their own.

**Question Type:** Multiple Choice  
**Randomize Answers:** No  
**Date Added:** Wed 29th Apr 2020  
**Last Modified:** N/A  
**QID#:** 20,260,688

**Question 2**

Primary 3 Science » Primary 3 Science (Term 3)

2 pts

The chart below shows how some living things, A, B, C and D, are observed and compared.

Living Thing	Need air, food and water	Can move from one place to another	Make its own food	Is a bacteria
A	✓	✓	X	X
B	✓	X	✓	X
C	✓	✓	X	X
D	✓	✓	X	✓

(✓ - Yes, X - No)

Which of the following has similar characteristics of a plant?

- A) A
- ✓ B) B
- C) C
- D) D

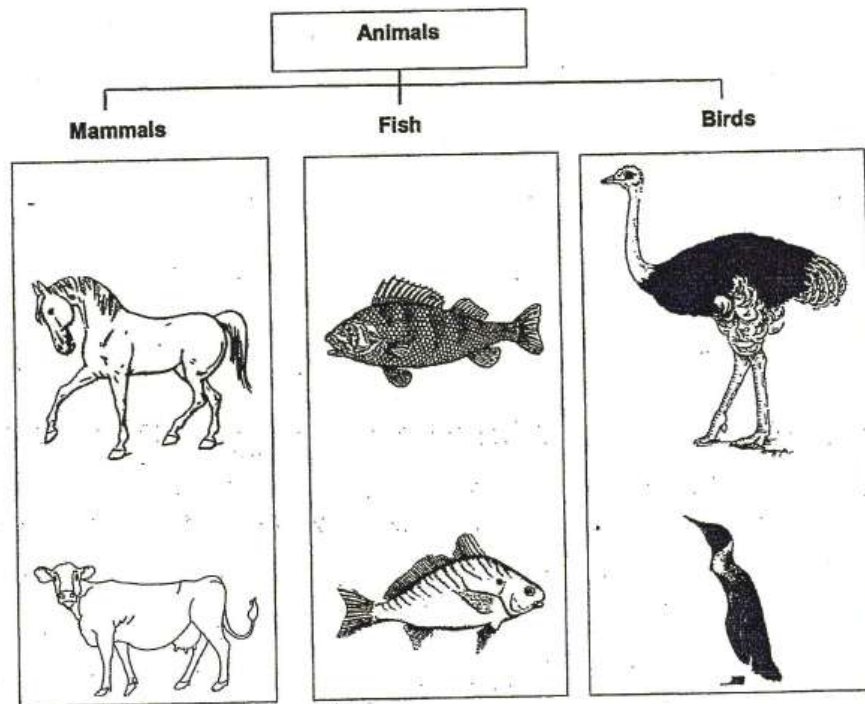
**Question Type:** Multiple Choice  
**Randomize Answers:** No  
**Date Added:** Wed 29th Apr 2020  
**Last Modified:** N/A  
**QID#:** 20,260,710

**Question 3**

Primary 3 Science » Primary 3 Science (Term 3)

2 pts

The table below shows six animals classified into three groups.



The six animals can be kept in the same groups shown above if they are classified according to \_\_\_\_\_.

- A) their size
- B) the food they eat
- C) how they reproduce
- ✓ D) their outer covering

**Question Type:** Multiple Choice  
**Randomize Answers:** No  
**Date Added:** Wed 29th Apr 2020  
**Last Modified:** N/A  
**QID#:** 20,260,727

[Answers](#) | [Edit](#) | [Duplicate](#) | [Used In](#) | [Reorder](#)

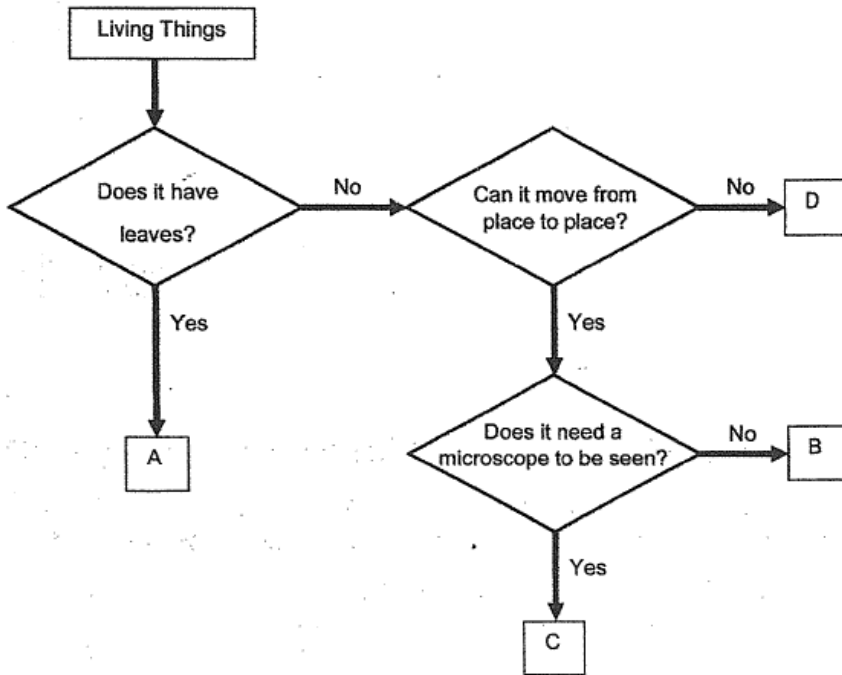
[Remove From Test](#)

## Question 4

Primary 3 Science » Primary 3 Science (Term 3)

2 pts

The diagram below shows a flow chart which can be used to classify living things.



Which of the following letters, A, B, C or D represents the correct living thing?

	Letter	Living Thing
(1)	A	mushroom
(2)	B	moss
(3)	C	bacteria
(4)	D	chicken

- A) 1  
 B) 2  
 ✓ C) 3  
 D) 4

**Question Type:** Multiple Choice  
**Randomize Answers:** No  
**Date Added:** Wed 29th Apr 2020  
**Last Modified:** N/A  
**QID#:** 20,260,737

[Answers](#) | [Edit](#) | [Duplicate](#) | [Used In](#) | [Reorder](#)

[Remove From Test](#)

## Question 5

Primary 3 Science » Primary 3 Science (Term 3)

2 pts

The table below shows the characteristics of four animals, A, B, C and D.  
(✓) means the animal has the characteristic and (X) means it does not.

Animal	Has feelers	Has dry scales as outer covering	Reproduces by laying eggs	Lives on land
A	X	✓	✓	✓
B	✓	X	✓	✓
C	X	✓	✓	X
D	X	X	X	✓

The diagram below shows animal R.



Which of the following animals from the table above is likely to be animal R?

- ✓ A) A
- B) B
- C) C
- D) D

**Question Type:** Multiple Choice  
**Randomize Answers:** No  
**Date Added:** Wed 29th Apr 2020  
**Last Modified:** N/A  
**QID#:** 20,260,749

[Answers](#) | [Edit](#) | [Duplicate](#) | [Used In](#) | [Reorder](#)

[Remove From Test](#)

## Question 6

Primary 3 Science » Primary 3 Science (Term 3)

2 pts

Which of the following characteristics are common to all birds?

- A: They can fly.
- B: They lay eggs.
- C: They have feathers.

- A) A and B only
- B) A and C only
- ✓ C) B and C only
- D) A, B and C

**Question Type:** Multiple Choice  
**Randomize Answers:** No  
**Date Added:** Wed 29th Apr 2020  
**Last Modified:** N/A

QID#:

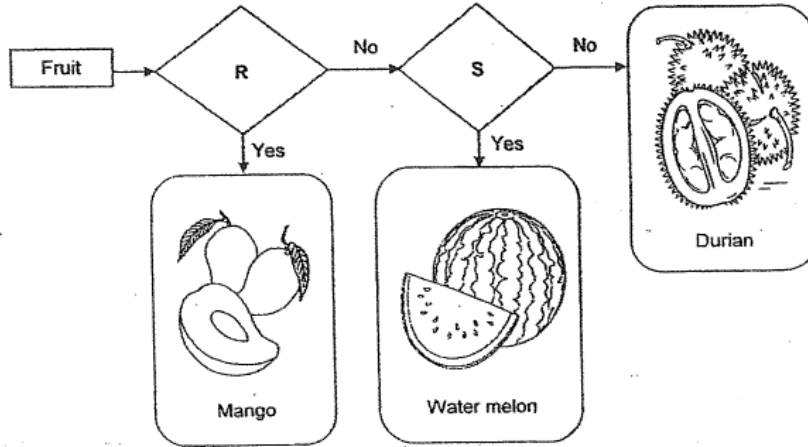
20,260,769

[Answers](#) | [Edit](#) | [Duplicate](#) | [Used In](#) | [Reorder](#)
[Remove From Test](#)**Question 7**

Primary 3 Science » Primary 3 Science (Term 3)

2 pts

7. Study the flowchart below.



Which one of the following best represents 'R' and 'S'?

	R	S
(1)	Does it have rough skin?	Does it have one seed?
(2)	Does it have many seeds?	Does it have rough skin?
(3)	Does it have one seed?	Does it have smooth skin?
(4)	Does it have smooth skin?	Does it have many seeds?

- A) 1  
 B) 2  
 ✓ C) 3  
 D) 4

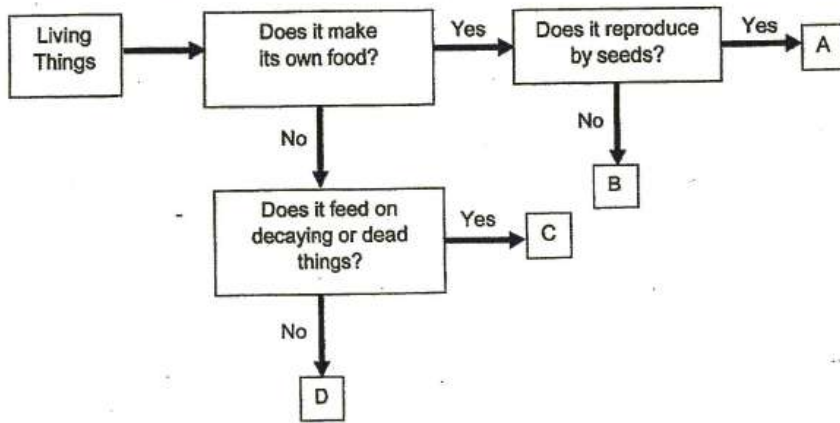
**Question Type:** Multiple Choice  
**Randomize Answers:** No  
**Date Added:** Wed 29th Apr 2020  
**Last Modified:** N/A  
**QID#:** 20,260,789

[Answers](#) | [Edit](#) | [Duplicate](#) | [Used In](#) | [Reorder](#)
[Remove From Test](#)**Question 8**

Primary 3 Science » Primary 3 Science (Term 3)

2 pts

The chart below shows the characteristics of some living things.



Based on the flowchart above, which of the following statements is likely to be correct?

- ✓ A) Living thing A is a plant.
- B) Living thing B is a fungi.
- C) Living thing C is a fern.
- D) Living thing D is a non-flowering plant.

**Question Type:** Multiple Choice  
**Randomize Answers:** No  
**Date Added:** Wed 29th Apr 2020  
**Last Modified:** N/A  
**QID#:** 20,260,819

[Answers](#) | [Edit](#) | [Duplicate](#) | [Used In](#) | [Reorder](#)

[Remove From Test](#)

## Question 9

Primary 3 Science » Primary 3 Science (Term 3)

2 pts

When John chases a rat, it runs away in fear.  
 Which of the following characteristics does the rat show?

- ✓ A) It can grow.
- B) It can reproduce.
- C) It needs food.
- D) It responds to changes.

**Question Type:** Multiple Choice  
**Randomize Answers:** No  
**Date Added:** Wed 29th Apr 2020  
**Last Modified:** N/A  
**QID#:** 20,260,828

[Answers](#) | [Edit](#) | [Duplicate](#) | [Used In](#) | [Reorder](#)

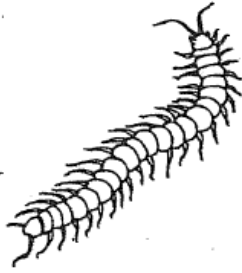
[Remove From Test](#)

## Question 10

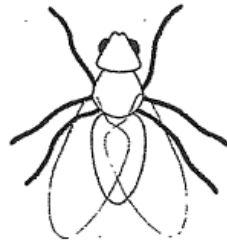
Primary 3 Science » Primary 3 Science (Term 3)

2 pts

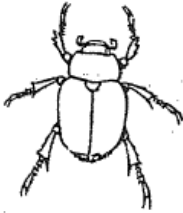
Look at the animals shown below.



A



B



C



D

Which of the following animals are insects?

- ✓ A) A and B only
- B) A and C only
- C) C and D only
- D) B, C and D only

Question Type: Multiple Choice  
 Randomize Answers: No  
 Date Added: Wed 29th Apr 2020  
 Last Modified: N/A  
 QID#: 20,260,840

[Answers](#) | [Edit](#) | [Duplicate](#) | [Used In](#) | [Reorder](#)

[Remove From Test](#)

## Question 11

Primary 3 Science » Primary 3 Science (Term 3)

2 pts

Look at the two plants shown below.



Which statement shows the similarity between the two plants?



- A) Both can make their own food.  
 B) Both reproduce by spores.  
 ✓ C) Both have flowers.  
 D) Both grow in water.

**Question Type:** Multiple Choice  
**Randomize Answers:** No  
**Date Added:** Wed 29th Apr 2020  
**Last Modified:** N/A  
**QID#:** 20,260,859

[Answers](#) | 
 [Edit](#) | 
 [Duplicate](#) | 
 [Used In](#) | 
 [Reorder](#)

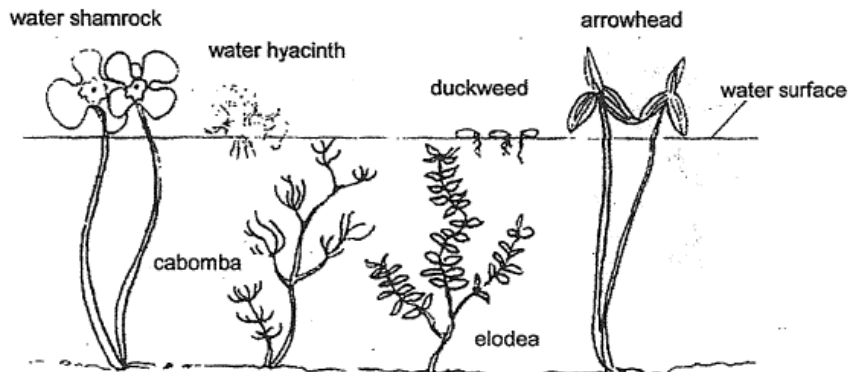
[Remove From Test](#)

## Question 12

Primary 3 Science » Primary 3 Science (Term 3)

2 pts

Study the water plants in the diagram below.



Study the note given below.

**Note:**

Floating plants – found floating on the water surface

Half submerged plants – part of the plant grows out of the water

Fully submerged plants – whole plant grows below water surface

Which of the following shows the correct grouping of the water plants?

	<b>Floating plants</b>	<b>Half submerged</b>	<b>Fully submerged</b>
(1)	water shamrock	water hyacinth	arrowhead
(2)	cabomba	elodea	duckweed
(3)	duckweed	arrowhead	elodea
(4)	water hyacinth	water shamrock	arrowhead

- A) 1  
 B) 2  
 ✓ C) 3  
 D) 4

**Question Type:** Multiple Choice  
**Randomize Answers:** No

Date Added: Wed 29th Apr 2020  
 Last Modified: N/A  
 QID#: 20,260,871

[Answers](#) | [Edit](#) | [Duplicate](#) | [Used In](#) | [Reorder](#)

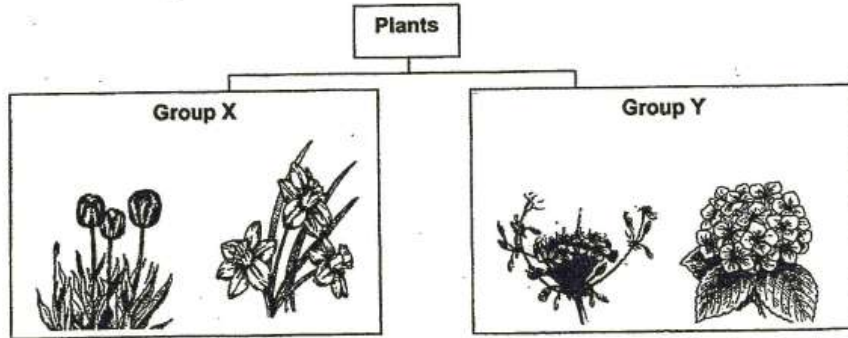
[Remove From Test](#)

## Question 13

Primary 3 Science » Primary 3 Science (Term 3)

2 pts

Study the classification table below carefully.



What could group X and group Y represent?

	<b>Group X</b>	<b>Group Y</b>
(1)	water plants	land plants
(2)	flowering plants	non - flowering Plants
(3)	weak stems	strong stems
(4)	flowers grow singly	flowers grow in bunches

- ✓ A) 1  
 B) 2  
 C) 3  
 D) 4

**Question Type:** Multiple Choice  
**Randomize Answers:** No  
**Date Added:** Wed 29th Apr 2020  
**Last Modified:** N/A  
**QID#:** 20,260,883

[Answers](#) | [Edit](#) | [Duplicate](#) | [Used In](#) | [Reorder](#)

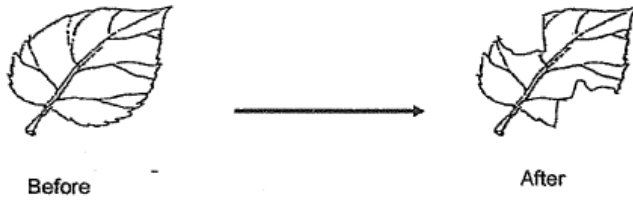
[Remove From Test](#)

## Question 14

Primary 3 Science » Primary 3 Science (Term 3)

2 pts

14. The diagram below shows what happened to the leaf of a plant after a period of time.



The change in the leaf was caused by a butterfly during a stage in its life cycle.

Which stage is it?

- ✓ A) egg
- B) larva
- C) pupa
- D) adult

**Question Type:** Multiple Choice  
**Randomize Answers:** No  
**Date Added:** Wed 29th Apr 2020  
**Last Modified:** N/A  
**QID#:** 20,260,915

[Answers](#) | [Edit](#) | [Duplicate](#) | [Used In](#) | [Reorder](#)

[Remove From Test](#)

## Question 15

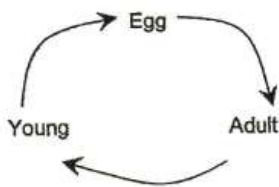
Primary 3 Science » Primary 3 Science (Term 3)

2 pts

Alice was asked to draw and label the life cycle of an animal that has 3 stages. She drew 4 different life cycles as shown below.

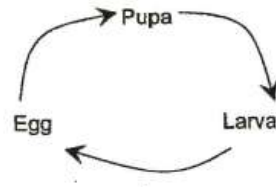
Which one of the life cycles is correct?

(1)



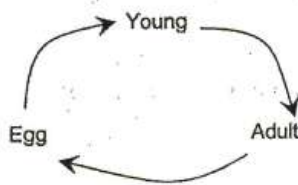
Life Cycle A

(2)



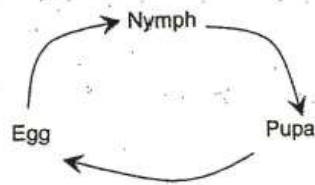
Life Cycle B

(3)



Life Cycle C

(4)



Life Cycle D

- ✓ A) 1

- B) 2  
C) 3  
D) 4

**Question Type:** Multiple Choice  
**Randomize Answers:** No  
**Date Added:** Wed 29th Apr 2020  
**Last Modified:** N/A  
**QID#:** 20,260,930

[Answers](#) | [Edit](#) | [Duplicate](#) | [Used In](#) | [Reorder](#)

[Remove From Test](#)

## Question 16

Primary 3 Science » Primary 3 Science (Term 3)

0 pts

### Section B: Structured Questions

Please write your answers on a paper.

*This question is designed for extended answers that parent/ teacher will have to assign and guide child to attempt after the test has been completed.*

*Grading: This question type is not graded on this system and will not affect the final score as it was designed in such a way that it requires manual assistance.*

Ben picked up some things from his school garden.

He put them into two groups based on their similarities. He put one group in container P and the other group in container Q. He placed some food and water in both containers.

He observed them for two weeks and recorded his findings in the table below.

	Container P	Container Q
A	Moved by itself most of the time.	No movement at all.
B	Curled up when touched.	Did not respond when touched.
C	Food and water became lesser.	Food and water were untouched.
D	Grew bigger after 2 weeks.	Remained the same.

What do you think are in the containers?

[2]

Use the words, "living things" or "non-living things", to fill in the blanks below correctly.

Container P : \_\_\_\_\_

Container Q : \_\_\_\_\_

**Question Type:** Essay  
**Date Added:** Wed 29th Apr 2020  
**Last Modified:** N/A  
**QID#:** 20,261,014

### Correctly answered feedback

Container P: Living things  
Container Q: Non-living things

**Incorrectly answered feedback**

Container P: Living things  
 Container Q: Non-living things

[Answers](#) | [Edit](#) | [Duplicate](#) | [Used In](#) | [Reorder](#)

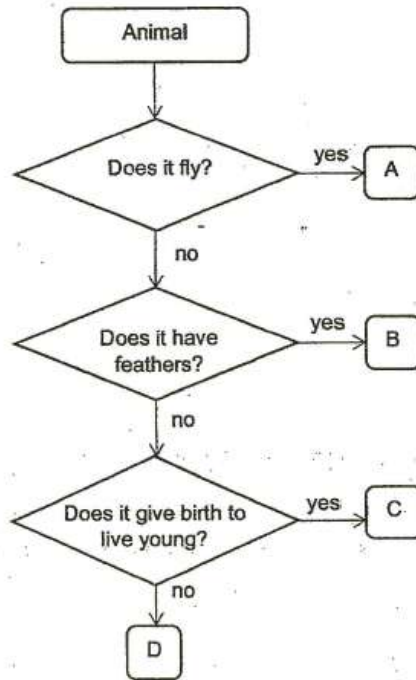
[Remove From Test](#)

**Question 17**

Primary 3 Science » Primary 3 Science (Term 3)

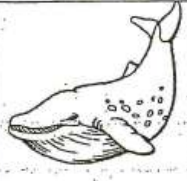



0 pts

Study the flowchart below.



The table below shows four animals.

Fill in the boxes below correctly with the letters A, B, C and D from the flowchart above.

			
Whale	Frog	Cassowary	Housefly

Question Type: Essay  
 Date Added: Wed 29th Apr 2020  
 Last Modified: N/A  
 QID#: 20,261,047

**Correctly answered feedback**

Whale	C	Frog	D	Cassowary	B	Housefly	A
-------	---	------	---	-----------	---	----------	---

**Incorrectly answered feedback**

Whale	C	Frog	D	Cassowary	B	Housefly	A
-------	---	------	---	-----------	---	----------	---

[Answers](#) | 
 [Edit](#) | 
 [Duplicate](#) | 
 [Used In](#) | 
 [Reorder](#)

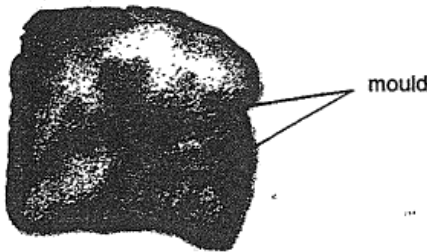
[Remove From Test](#)

**Question 18**

Primary 3 Science » Primary 3 Science (Term 3)

0 pts

A slice of bread was placed by the kitchen for a few weeks. Some mould was seen growing on it after a week.



Based on the information given above, put a tick (✓) next to the statement(s) that is/are correct about the bread mould. [2]

	Statements	Tick (✓)
(a)	It is a non-flowering plant.	
(b)	It reproduces from spores.	
(c)	It gets its food from the slice of bread.	

**Question Type:** Essay  
**Date Added:** Wed 29th Apr 2020  
**Last Modified:** N/A  
**QID#:** 20,261,069

**Correctly answered feedback**

	Statements	Tick (✓)
(a)	It is a non-flowering plant.	
(b)	It reproduces from spores.	✓
(c)	It gets its food from the slice of bread	✓

**Incorrectly answered feedback**

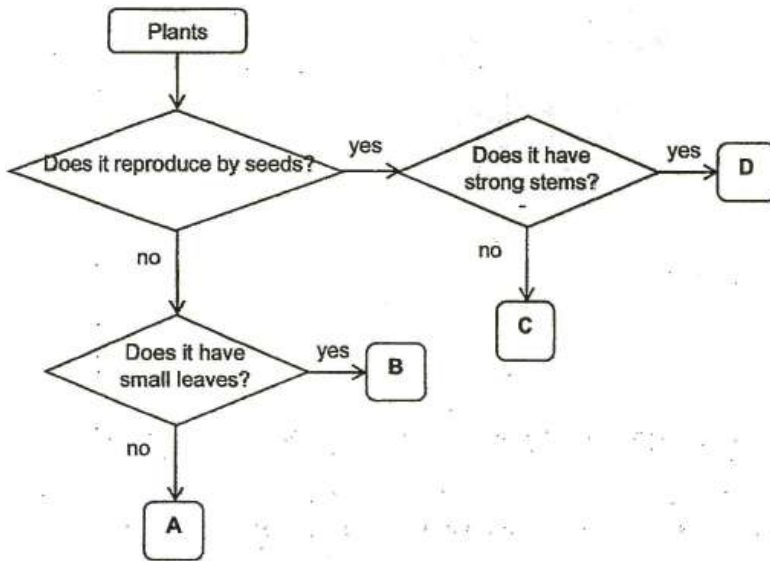
	Statements	Tick (✓)
(a)	It is a non-flowering plant.	
(b)	It reproduces from spores.	✓
(c)	It gets its food from the slice of bread	✓

**Question 19**

Primary 3 Science » Primary 3 Science (Term 3)

0 pts

The flowchart below shows the characteristics of plants in groups A, B, C and D.



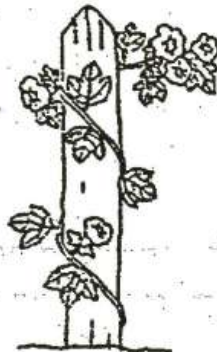
The diagrams below show plants S and T. Write in the boxes below which group (A, B, C or D) can these two plants be put in.

[2]

Plant S



Plant T





**Question Type:** Essay  
**Date Added:** Wed 29th Apr 2020  
**Last Modified:** N/A  
**QID#:** 20,261,085

**Correctly answered feedback**

Plant S: D  
 Plant T: C

**Incorrectly answered feedback**

Plant S: D  
 Plant T: C

## Question 20

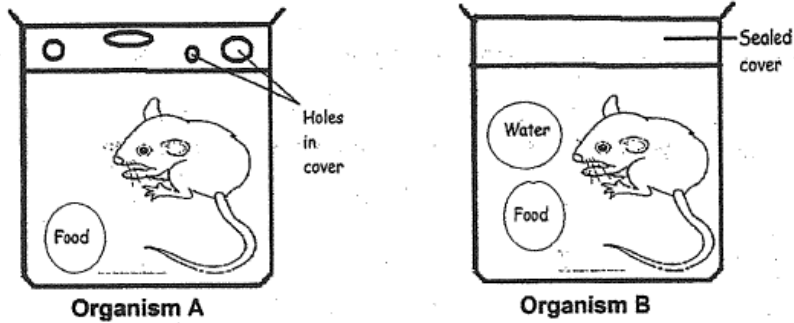
### Section C: Open-Ended Questions

Please write your answers on a paper.

This question is designed for extended answers that parent/ teacher will have to assign and guide child to attempt after the test has been completed.

Grading: This question type is not graded on this system and will not affect the final score as it was designed in such a way that it requires manual assistance.

Observe the organisms A and B in the diagrams below.



Only one organism was alive after two days.

Which organism, A or B was still alive after two days?  
Give reason for your answer

[1]

State one **other** characteristic of living things.

Question Type: Essay  
Date Added: Wed 29th Apr 2020  
Last Modified: N/A  
QID#: 20,261,125

#### Correctly answered feedback

Organism A. The animal has air to survive.

Living things need food and water to survive.

#### Incorrectly answered feedback

Organism A. The animal has air to survive.

Living things need food and water to survive.

[Answers](#) | [Edit](#) | [Duplicate](#) | [Used In](#) | [Reorder](#)

[Remove From Test](#)

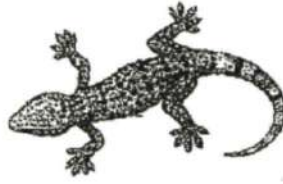
## Question 21



The diagram below shows two animals, A and B, which are not drawn to scale.



Animal A



Animal B

Based only on the pictures above, state two differences between animals A and B. (*Do not compare their sizes.*)

[2]

Difference 1:

---



---

Difference 2:

---



---

Question Type: Essay  
 Date Added: Wed 29th Apr 2020  
 Last Modified: Thu 16th Jul 2020  
 QID#: 20,261,140

**Correctly answered feedback**

**Difference 1 : Animal A has wings while animal B does not.**

**Difference 2 : Animal A has 6 legs while animal B has 4 legs.**

**Incorrectly answered feedback**

**Difference 1 : Animal A has wings while animal B does not.**

**Difference 2 : Animal A has 6 legs while animal B has 4 legs.**

[Answers](#) | [Edit](#) | [Duplicate](#) | [Used In](#) | [Reorder](#)

[Remove From Test](#)

## Question 22

Primary 3 Science » Primary 3 Science (Term 3)

1 pt

Which animal group does animal B belong to?

[1]

---

Accepted answers:

✓ reptile

Question Type: Free Text  
 Date Added: Thu 16th Jul 2020  
 Last Modified: N/A  
 QID#: 22,459,092

[Answers](#) | [Edit](#) | [Duplicate](#) | [Used In](#) | [Reorder](#)

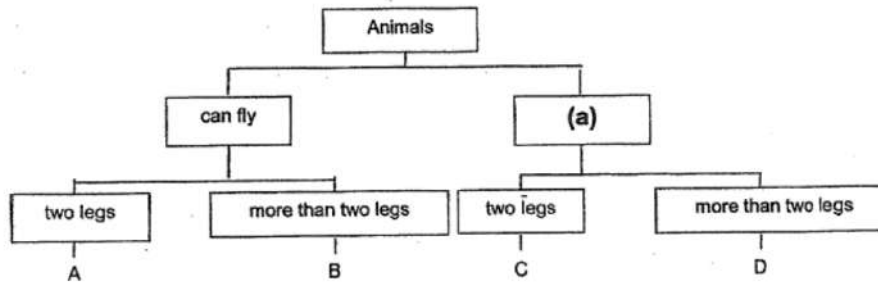
[Remove From Test](#)

## Question 23

Primary 3 Science » Primary 3 Science (Term 3)

0 pts

Study the classification table shown below.



a) Give a suitable heading for (a) in the table above.

[1]

Question Type: Essay  
 Date Added: Wed 29th Apr 2020  
 Last Modified: Thu 16th Jul 2020  
 QID#: 20,261,157

Correctly answered feedback

(a) Cannot fly.

Incorrectly answered feedback

(a) Cannot fly.

[Answers](#) | [Edit](#) | [Duplicate](#) | [Used In](#) | [Reorder](#)

[Remove From Test](#)

## Question 24

Primary 3 Science » Primary 3 Science (Term 3)

1 pt

- b) Jane saw animal K in her garden and recorded her observations in her science journal.

Animal K can fly.  
Animal K has six legs.

Which group, A, B, C or D does animal K belong to?

[1]

- A) A  
 B) B  
 C) C  
 D) D

**Question Type:** Multiple Choice  
**Randomize Answers:** No  
**Date Added:** Thu 16th Jul 2020  
**Last Modified:** N/A  
**QID#:** 22,459,384

[Answers](#) | [Edit](#) | [Duplicate](#) | [Used In](#) | [Reorder](#)

[Remove From Test](#)

## Question 25

Primary 3 Science » Primary 3 Science (Term 3)

0 pts

- c) Study the diagram of animal E below.



**Animal E**

Explain why animal E cannot be placed in any group in the classification table shown above.

[1]

**Question Type:** Essay  
**Date Added:** Thu 16th Jul 2020  
**Last Modified:** N/A  
**QID#:** 22,459,397

**Correctly answered feedback**

**(c) It has no legs.**

**Incorrectly answered feedback**

**(c) It has no legs.**

[Answers](#) | 
 [Edit](#) | 
 [Duplicate](#) | 
 [Used In](#) | 
 [Reorder](#)

[Remove From Test](#)

## Question 26

Primary 3 Science » Primary 3 Science (Term 3)

0.5 pts

Some pupils observed the life cycle of insect X.  
The table below shows what they observed at each stage of growth in the life cycle.

Date	Development at each stage	Amount of food taken
13 July	Eggs were laid in water.	0 g
17 July	?	50 g
26 July	Pupae were seen.	0 g
1 August	Pupae became adult insects.	47 g

Based on the information given, answer the following questions.

How many stages are there in the life cycle of insect X? [1/2]

Accepted answers:

✓ four

✓ 4

**Question Type:** Free Text  
**Date Added:** Thu 16th Jul 2020  
**Last Modified:** N/A  
**QID#:** 22,459,439

[Answers](#) | 
 [Edit](#) | 
 [Duplicate](#) | 
 [Used In](#) | 
 [Reorder](#)

[Remove From Test](#)

## Question 27

Primary 3 Science » Primary 3 Science (Term 3)

0 pts

What has happened to insect X on 17<sup>th</sup> July? [1/2]

On 26<sup>th</sup> July, insect X did not take in any food.  
Explain why. [1]

**Question Type:** Essay  
**Date Added:** Wed 29th Apr 2020  
**Last Modified:** Thu 16th Jul 2020  
**QID#:** 20,261,181

**Correctly answered feedback**

It turn into a larva.

At pupa stage, the animal does not take food because the animal is growing.

**Incorrectly answered feedback**

It turn into a larva.

At pupa stage, the animal does not take food because the animal is growing.

[Answers](#) | [Edit](#) | [Duplicate](#) | [Used In](#) | [Reorder](#)

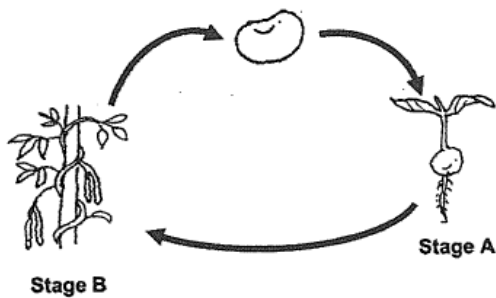
[Remove From Test](#)

**Question 28**

Primary 3 Science » Primary 3 Science (Term 3)

0 pts

The diagram below shows the life cycle of a plant.



a) Name the stages, A and B in the table below.

[1m]

Stage A	
Stage B	

b) At which stage, A or B, will the plant be able to reproduce?  
Give a reason for your answer

[1m]

---



---

Question Type: Essay  
Date Added: Wed 29th Apr 2020  
Last Modified: N/A  
QID#: 20,261,197

**Correctly answered feedback**

- (a) Stage A : Young plant
- Stage B : Adult plant

- (b) Stage B. Stage B has flowers which has seeds to reproduce.

**Incorrectly answered feedback**

- (a) Stage A : Young plant
- Stage B : Adult plant

- (b) Stage B. Stage B has flowers which has seeds to reproduce.

[Answers](#) | [Edit](#) | [Duplicate](#) | [Used In](#) | [Reorder](#)

[Remove From Test](#)